

MATCEI

Michigan Association of Teachers of Children with
Emotional Impairments

August 2011



MATCEI
Board of Directors
2011-2012

Richard Spring
President

rspring72@hotmail.com

Wendy Warren
Past President
Membership Chair

eiteach1017@yahoo.com

Karen West
Secretary
Conference Chair
Newsletter Editor

kwest@inghamisd.org

Michelle Urbanek
Treasurer
SEAC Representative

murbanek@inghamisd.org

Chris Kinney
Representative
Web Master

Chrispher_k86@yahoo.com

Marie Moreland
Representative
Philanthropy Chair
Awards Chair

moreland@sresd.org

Welcome to the 2011-2012 School Year

Welcome all to a new and exciting school year. Look inside for a special letter from our new President, valuable SEAC updates, a book review, a message about our fall conference, and much more!

MATCEI

What a Great Organization!

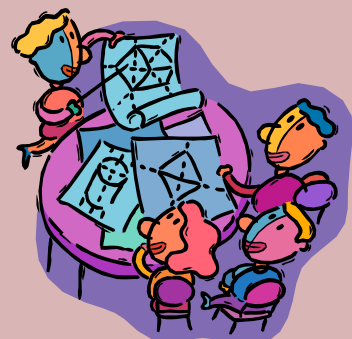
Do you want to learn more, be a part, and help us all improve outcomes for students with behavioral dysfunction?

Come to a MATCEI meeting!

MATCEI 2011-2012 Meeting Schedule

All meetings begin at 6:30pm

- 9-14-11 @ SPAGS in Williamston
- 10-12-11 @ SPAGS in Williamston
- 11-16-11 @ SPAGS in Williamston
- 12-14-11 @ Tomato Bros. in Howell
- 1-11-12 @ Tomato Bros in Howell
- 2-8-12 @ Tomato Bros in Howell
- 3-14-12 @ SPAGS in Williamston
- 4-11-12 @ SPAGS in Williamston
- 5-9-12 @ SPAGS in Williamston



It is the mission of MATCEI to support and assist its members committed to providing quality educational experiences for all students struggling with emotional and behavioral challenges.

Greetings from the President Richard Spring, LMSW



Hello MATCEI members! For those of you who don't know me, I am Richard Spring and have served on the MATCEI board for six years. I represented MATCEI on the Special Education Advisory Committee for three years. I was a school social worker for 25 years, and bookended my career working at two day treatment programs for students with emotional impairments for fourteen years (Beacon Day Treatment and Secondary Learning Center). I, like you, have a passion for the work we do on behalf of students with behavioral and emotional challenges.

MATCEI has a proud history which includes: being the nation's oldest organization focused exclusively on the needs of students with behavioral challenges and the staff who work with them, more than 50 years of annual conferences, a long history of providing scholarships to prospective EI teachers and philanthropic grants to teachers to fund student activities, and a long running informative newsletter for members.

In recent years the MATCEI board has worked diligently to provide **very high quality** conferences that require attendees make difficult decisions about which workshops to choose when each selection is of such high quality. This year we outdid ourselves, and even relocated to Mount Pleasant to bring the conference closer for most attendees.

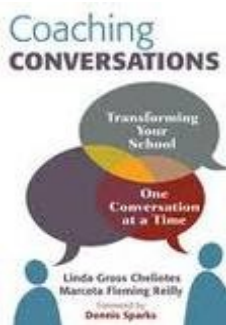
The MATCEI board is currently a small group of extremely dedicated members. We need to bring more members to the board in order to maintain the high standards we have set for this important organization. There are currently eight unfilled board positions. If you are interested in a leadership position on a state organization we have a one available for you! This would require attendance at monthly meetings in East Lansing, and a bit of work over email during the month. MATCEI has teachers in our title, but MATCEI represents every discipline that works with students with emotional impairments.

But why would anyone want to take on more at a time when our jobs continually ask/require that we take on more with fewer resources? The reason is simple. It is because of the job we do with students with a history of failure, and the worst graduation rates of all special education students. They need us to step forward, they need us to advocate on their behalf, they need us to make sure we have the most up to date research based information at our fingertips so we can turn those graduation rates around so they can believe and become contributing members of society. It is about making a difference in the lives of the children who aren't ready to take that on themselves. ..yet!

The Book Nook

August Pick: found at Amazon.com

Coaching Conversations: Transforming Your School One Conversation at a Time
Linda Gross Cheliotas & Marceta Fleming Reilly



Learn how coaching conversations—which are different from supervisory and mentoring conversations—shift responsibility for instructional improvement from the school leader to the entire school community! In this example packed guide, the authors use current research and their own extensive experience to help school leaders

- Adopt new habits for working with teachers, staff, and students
- Use the power of committed listening, intentional conversations, and nonjudgmental feedback
- Create positive changes in how people think and interact

Back to School Ice Breakers!

Wendy Warren



Fun Back to School Idea: Getting to Know ME activities

Elementary:

Instead of using a boring interest fill in the blank inventory, use a printed out flat cube. Search online to find printable cubes that are easy to cut out. You can keep them as 8 1/2 x 11 or blow them up bigger (I used 11 x 17). Write things (before you copy) or have a list that students can choose from printed out for them. For example: My favorite story/book is _____, My favorite subject is _____, I want to visit _____ someday, I am a good student when _____ and so on. On top of the cube, have them draw a picture of themselves or take and print pictures during the first week. Before they glue it together (for younger kids, I have an upper elementary helper/s do this) they need to stick a “secret note” inside the box where they tell me something crazy or unusual about themselves. Make a box to for display.

Middle – High School:

When the students come in to class, write 10 statements on the board or large sheet of paper for the students to see – this could be about your favorite things, family, where you went to school, where you went on vacation and so on. Nine of the statements should be true and one of them should be false. As each student enters the room they generally read the statements and assume they are all true. Read the statements to the class then explain that only nine of them are actually true. Have them predict which one is false.

Re-read the statements to the class and let them know which ones are true and which one is false. Students usually remember this activity and information they learned about me all year.

Then have the students come up with a list (anywhere from 3 to 10 works well). Then have them partner up and see if they can guess which one is false. You can then have each student introduce their partner by saying, “This is Karen, she is organized and helpful, but does not like dancing.” Then have the second person do the same. This is a great way to get to know the students and to work in small groups to start with.

Save the Date

- Friday-November 4, 2011—Bryan Dean: Guerilla Teaching
(see pages 5 and 6 of this newsletter!)
- April 18-20, 2012—MATCEI 54th Annual Spring Conference
Mt. Pleasant Comfort Inn Hotel and Suites

Details coming soon!

And the Survey Says...!

We want you all to know that the surveys from the Spring Conference were tabulated, and to thank each of you who took the time to fill them out. We can't stress enough how important that information is to the board and to those on the Conference Committee who work so hard to bring a **quality conference** to you every year (not to mention the one day fall in-service which you hear more about in this newsletter).

The majority of respondents rated the quality of presentations, conference registration, hotel registration, room accommodations, food, and the new location in the two highest categories. We were delighted to get that feedback from you as we were going out on a limb with the change of venue, and hoped we were making the right decision. We will also make sure to monitor the temperature in workshops to maintain a comfortable setting for everyone.

There were a number of additional comments we have also found helpful in our plans to move MATCEI forward. Some felt they needed more special education specific content. This is a tricky balance in the whole RtI universe as we are in such a time of transition. We will continue to work to walk that fine line. Others commented about the need to include more content on the website. The board and our member webmaster have focused attention on this issue during our summer work meetings, so please keep checking back at www.matcei.org and **join the MATCEI group on Facebook**. We are excited about the possibilities for sharing, reviews of behavior management programs, book discussions, and problem solving via that format. As you will also see in this newsletter, we are giving you ample opportunity to get your conference request in as soon as you return to school as the schedule for the 2012 Spring Conference is set!

SEAC 2010-2011 Annual Report

Michelle Urbanek



- MATCEI is one of 25 organizations represented on the Special Education Advisory Committee, which helps advise MDE on policies and regulations. During the 2010-11 year the SEAC provided comment on the proposed changes to Michigan Administrative Rules for Special Education with regard to the role of the school social worker, eligibility decisions, IEP process, teacher requirements and Individualized Family Service Plan, as well as proposed changes to procedures for State Complaints, Due Process complaints, and Notice and Consent. This committee also helped set targets for SPP #14 which concerns Postsecondary Outcomes.
- State advisory panels are also responsible for advising on unmet needs within the state with regard to students with disabilities. The SEAC issued a communiqué to its members with regard to students with disabilities being sent home from school for behaviors and that removal not being counted as a suspension ('de facto suspension'). The SEAC found that the practice was often a function of erroneous information or assumptions made by the school and/or parents. Data regarding students with disabilities who are suspended are monitored through SPP 4 – Suspension and Expulsion. Additionally, the SEAC emphasized the potential consequences of failing to implement positive behavioral supports for students with disabilities requiring removal.
- The SEAC regularly requests learning presentations to develop the knowledge of the panel. This year we participated in learning more about State Advisory Panels, procedural safeguards, Graduation/Termination of Service and the Michigan Merit Curriculum, and data literacy. So what's on the horizon for SEAC next year? The newly developed Office of Early Childhood, teacher evaluations, services for 21-26 year olds, virtual FAPEjust to name a few. Look for monthly updates in your MATCEI newsletter.



MATCEI
2011 Fall Conference

Presents

November 4,
2011

Ingham ISD
Mason Mi.

8:30-3:00

SB-CEU's and SSW CE's
Pending

Bryan Dean

Guerilla Teaching

Building the UDL Classroom

Universal
Design
For
Learning



Learning is as essential to us as breathing. Explore how creative projects can engage and motivate your learners, **boost literacy skills**, and build contents understanding while celebrating their successes. This **hands-on seminar** highlights how technology is the great equalizer and builds constructivist environments that promote **intrinsic motivation** and **authentic learning**. Discover ideas, tools, and techniques that provide a variety of strategies for **engaging students**.

For anyone working with students with behavioral, motivational, and/or learning challenges!

Objectives:

- Develop project ideas that are constructivist in nature and prompt authentic learning
- Discover tools that are compatible with Universal Design theories and affective solutions to curriculum based problems
- Explore and understand the connection between controlled learning environments and student achievement
- Through integrated workshops design authentic project ideas that are translated to a technological medium
- Develop ideas, social stories, etc., to use with students during group or individual sessions

DrRevDean@gmail.com Twitter: @DrRevDean Facebook: BryanDeanGuerillaTeaching/UDLCoach

**Michigan Association of Teachers of Children with Emotional Impairments
MATCEI**

Fall Conference

November 4, 2011 8:30-3:00 pm
Ingham ISD 2630 W. Howell Rd Mason Mi 48854

CONFERENCE REGISTRATION FORM

Name: *Last* _____ *First* _____ *M.I.* _____
Address: *Street* _____ *Apt. No.* _____
City: _____ *State* _____ *Zip* _____
____ Please check here if this is a new address. Phone: (w) _____ (H) _____
Fax: _____ E-Mail Address _____

Job Title: ___ EI self-contained Teacher ___ School Social Worker ___ School Psychologist
 ___ Resource Room Tchr/TC ___ Para-professional ___ Administrator
 ___ Other

The MATCEI membership policy allows joining MATCEI at any time during the year with renewal after 12 months. Non-members of MATCEI may join at this time and take advantage of member fees.

Please check one below

- | | | |
|-----------|---|---|
| ___ \$100 | MATCEI members | ___ Please check if you need gluten free for lunch |
| ___ \$50 | Full time student/MATCEI member | |
| ___ \$50 | *Special* 2 full time students/both MATCEI members
Register at the same time | |
| ___ \$150 | Non MATCEI member | |
| ___ \$75 | Full time student/Non MATCEI member | ** Visit MATCEI.org for registration form or additional information |
| ___ \$30 | Membership | |
| ___ \$10 | Full time student membership | |

(Please enclose check or money order payable to MATCEI)

**Return this completed form with payment to Wendy Warren - 21116 Flanders, Farmington Hills, MI
48335**